

Contens (V0.99)

What is the DBExtender for Delphi good for?

The DBExtender was created to compensate the shortage on the datasensitive dialogobjects of Delphi and to cover the DB-tasks you have to do over and over again.

To reach that goal, we went an other way. There are a lot of new datasensitive dialogobjects. Several of them are really good, but all of them have the same problem: they offer a lot of new functions but no real relief, because all functions muß be called by the programm or they must be linked together.

Actually, the components of Delphi are not to bad. You just have to help them a little bit. That's where the TDBExtender comes into place. He links himself into the messagequeue of the application to reach an extended standard behaviour for the form and its components. Hotkeys are interpreted before they are send to the components and are utilized to activate the extended functions (For example changing a record via [PgUp], [PgDwn], start locating fieldvalues, activating filters etc.). The DBextender knows about **all** tables within the form. Therefore, You do not have to tell the DBExtender which table will be the target for a special action. You just need **one** TDBExtender within a form for all extended functions on all tables and for accessing the ready-build dialogs for locating fieldvalues, filters etc.

To get access to these functions via mouse, a new navigator is part of the DBExtender for Delphi. It possess **14** new buttons (in comparison to the standard-navigator of Delphi). Furthermore, it offers some functions to make it more usable like vertical orientation, spacing between functiongroups, setting the size of the navigator by setting the size of the buttons and much more.

The main advantage of the TDBENavigator is, that you do not need one for each table within a form, you just need **one**. Through the link to the TDBExtender, the navigator knows which table to control.

And within MDI-Applications ? - That's the special clou! You do not need one or more navigators in each form. Just place one navigator within the Frameform of the MDI-Application and the navigator will automatically be switch to the right table of the focused MDI-Child. That's the way to give your applications a professional look.

If you have to write DB-Applications, do not bother arround with "standard-problems". Place one TDBExtender and TDBENavigator within the form and concentrate on the real problems of your application. Programming DB-Apps can be so easy, with the DBExtender for Delphi!

Unit

DBExtend

DBEBMDef

Functions:

- Online-Help integrateble within the IDE
- Changing focused dialogobjects through [Enter] (TAB-replacement in BOTH directions)
- Search on non-indexed fields (incl. search using substrings and memos)
- Define the directions of search (also temporary for continued search)
- Management of Bookmarks
- Tablefiltering (using highspeed BDE-Filters)
- Saving and loading tablefilters
- Tableview (distinguishes between fsNormal, fsMDIChild)
- Memoview (even out of a grid)
- Manoeuvre by group
- Duplicate fields
- Duplicate records
- LookUp (like in Paradox, according to the tabledefinition)
- Turn Form-Global editing on/off
- vertical navigator
- Automatic management of navigators within MDI-applications

Showing the table-status within a panel (RecNo, RecCount, Tablename, TableState)
DBExceptionhandling, showing the messages within a panel

= Predefined dialogs

Method LoadTblFilterFromFile

Used by

TDBExtender, Component

Declaration

```
procedure LoadTblFilterFromFile(Tbl : TDBDataSet; FileName : String);
```

Description

Method Clear

Used by

TBManager, Object

Declaration

```
procedure Clear;
```

Description

The method Clear deletes all TBMIItems managed by the TBManager.

Property DataSource

Used by

TDBNavigator, Component

Declaration

```
property DataSource : TDataSource;
```

Description

Runtime and read-only. This property returns the DataSource, the navigator is actually linked to.

Property VisBtnsRecord

Used by

TDBNavigator, Component

Declaration

```
property VisBtnsRecord : TRecordBtnSet;
```

Description

Through this set you decide, which Speedbuttons are shown within the functiongroup Record.

Possible values put in the set are:

Value	Visible Speedbutton
rnblInsert	Insert record
rnblDelete	Delete record
rnblEdit	Insert editmode
rnblPost	confirm recordchanging
rnblCancel	cancel recordchanging
rnblRefresh	Refresh DataSource

Method SetBookmark

Used by

TBManager, Object

Declaration

```
procedure SetBookMark(BMNo : Integer);
```

Description

The method SetBookMark creates a new TBMItem (bookmark) on the actual record of the via Table referenced TTable. The number of the bookmark equals the parameter BMNo. If a bookmark with that number exists, it will be deleted.

Property VisBtnsSearch

Used by

TDBENavigator, Component

Declaration

```
property VisBtnsSearch : TSrchBtnSet;
```

Description

Through this set you decide, which Speedbuttons are shown within the functiongroup Search.

Possible values put in the set are:

Value	Visible Speedbutton
snbSearch	Search on field
snbSearchNext	Continue last search
snbSetBookmark	Set a bookmark on active record
snbGotoBookmark	Move to record, linked to bookmark
snbTblFilter	Edit tablefilter
snbActiveFilter	Activate/Deactivate tablefilter
snbTableView	Switch to tableview

TDBExtender component

[Properties](#)

[Methods](#)

[Events](#)

[Hotkeys](#)

Unit

[DBExtend](#)

Description

Use the component TDBExtender to enrich all TTables, TQueries, TDataSources and datasensitive dialogobjects within a form.

Place **one** TDBExtender in the form. You have no need to define the used datasources, cause TDBExtender automatically determines the used DataSources and manages them internally. Set the [AllowKeys](#) property to decide, which hotkeys for databasecontrolling will be handled through the TDBExtender. If the focused dialogobject is a TDBEdit, TDBMemo, TDBRadioGroup, TDBCheckBox, TDBGrid or TDBImage, all actions will refer to the DataSource, linked to that dialogobject.

You can control the TDBExtender via mouse through the [TDBNavigator](#). Just like the TNavigator is controlled by the linked TDataSource, the states of the TDBNavigator-buttons are controlled by the linked TDBExtender.

Define the amount of records to be skipped through a group-manoevre by setting the [MoveBy](#) property. (Default is 5).

The properties [TVReadonly](#) and [TVAutoEdit](#) are defaults for tableviews. If you want to control the appearance and the behavior of the tableview, use the event [OnTableView](#).

If you have assigned a panel to the [StatusPanel](#) property, you can decide which statusinformation to show by setting the [ShowStatusOptions](#) property.

Use [MessagePanel](#), if you want actual informations and DBErrors to be shown within a panel (if [HandleDBExceptions](#) is true).

Through the [MasterSource](#) property you can define a DataSource, on which hotkeys and TDBNavigator-actions will be applied to, if a non DB-dialogobject has the focus.

If [ManageGlobalEdit](#) is set to true, you can toggle a editmode for the whole form via [GlobalEdit](#).

TDBNavigator Component

[Properties](#)

[Methods](#)

[Events](#)

[Speedbuttons](#)

Unit

[DBExtend](#)

Description

The TDBNavigator (TDBExtender-Navigator) component is used for controlling the actual datasource, referenced through the linked [TDBExtender](#). Every speedbutton references a hotkey of the TDBExtender. Furthermore, the Navigator offers two more functions, which can not be accessed through hotkeys: Aktiviate/Deactivate filter and Save/Load filter. The latter one can be accessed through a popupmenu. Right-click on the speedbutton for filterediting to open it.

Associate the TDBNavigator via its [DBExtender](#) property with a TDBExtender. The single buttons are activated/deactivated through the TDBExtender.



Use the properties [VisBtnsSearch](#), [VisBtnsMove](#), [VisBtnsRecord](#) and [VisBtnsExtend](#) to decide which speedbuttons will be shown within the functiongroups of the navigator.

Use the properties [GroupSpace1](#), [GroupSpace2](#) and [GroupSpace3](#) to define the distance between the single functiongroups

Use the [HorizOrientation](#) property to set the orientation of the navigator to horizontal or vertical.

Method SaveTblFilterToFile

Used by

TDBExtender, Component

Declaration

```
procedure SaveTblFilterToFile(Tbl : TDBDataSet; FileName : String);
```

Description

Methods

AddNavigator

ControllsDBAware

Create

Destroy

DuplicateFromPrior

DuplicateRecFromPrior

GetBMManager

GetDS_Tbl_Fld

GetDSFromControl

HandleNBBtn

LoadTblFilterFromFile

LocateNextPattern

LocateNextPatternReverse

LocatePattern

LocateViaDlg

LUDlg

MemoView

PanelMessage

RemoveNavigator

SaveTblFilterToFile

SelectBookmark

ShowStatus

TableView

TblFilterEdit

Property DBExtender

Used by

TDBNavigator, Component

Declaration

```
property DBExtender : TDBExtender;
```

Description

Use this property to link the navigator to a TDBExtender. This is similar to the DataSource-linking of a TNavigator.

Method Create

Used by

TDBExtender, Component

Declaration

```
constructor Create(AOwner : TComponent);
```

Description

Method AddNavigator

Used by

TDBExtender, Component

Declaration

```
procedure AddNavigator (Nav: TDBNavigator);
```

Description

Method Destroy

Used by

TDBExtender, Component

Declaration

```
destructor Destroy;
```

Description

Method RemoveNavigator

Used by

TDBExtender, Component

Declaration

```
procedure RemoveNavigator (Nav: TDBENavigator);
```

Description

Method ShowStatus

Used by

TDBExtender, Component

Declaration

```
procedure ShowStatus(DS : TDataSource);
```

Description

Press the Delete-button, to delete the selected bookmark.

Method PanelMessage

Used by

TDBExtender, Component

Declaration

```
procedure PanelMessage( msg : String; AType: TMsgDlgType ); virtual;
```

Description

PanelMessage is used for the output of the message-string on the via MessagePanel defined Panel.

AType defines the type of the message (mtError, mtWarning, mtInformation, etc.).

If MessagePanel is **nil**, PanelMessage will use a MessageDialog (only if AType is mtError or mtWarning)

In case of mtError and mtWarning, there will be a sytembeep together with the messageoutput (onyl is ErrorBeep is TRUE).

Method ControlIsDBAware

Used by

TDBExtender, Component

Declaration

```
function ControlIsDBAware( Control : TControl ) : Boolean;
```

Description

Method HandleNBBtn

Used by

TDBExtender, Component

Declaration

```
procedure HandleNBBtn( Btn : TDBENavigateBtn; Shift: TShiftState; Info  
: Longint);
```

Description

Method GetDSFromControl

Used by

TDBExtender, Component

Declaration

```
function GetDSFromControl( AControl : TObject; Var DS : TDataSource) :  
Boolean;
```

Description

Method GetDS_Tbl_Fld

Used by

TDBExtender, Component

Declaration

```
function GetDS_Tbl_Fld(      AControl : TObject;  
                           Var DS : TDataSource;  
                           Var Tbl : TDBDataSet;  
                           Var Fld : TField;  
                           Var FldNo : Integer;  
                           Var IsReadOnly : Boolean):Boolean;
```

Description

Properties

DataSource

DBExtender

VisBtnsSearch

VisBtnsMove

VisBtnsRecord

VisBtnsExtend

GroupSpace1

GroupSpace2

GroupSpace3

HorizOrientation

ButtonWidth

ButtonHeight

Align

DragCursor

DragMode

Enabled

Ctl3D

Hints

ParentCtl3D

ParentShowHint

PopupMenu

ConfirmDelete

ShowHint

TabOrder

TabStop

Visible

Attention : Properties without a jumpmark are equal to those of the TNavigator.

Method DuplicateFromPrior

Used by

TDBExtender, Component

Declaration

```
function DuplicateFromPrior(Fld : TField; Confirm : Boolean) :  
Boolean;
```

Description

Method DuplicateRecFromPrior

Used by

TDBExtender, Component

Declaration

```
function DuplicateRecFromPrior(DTbl : TDBDataSet; Confirm :  
Boolean) : Boolean;
```

Description

DuplicateRecFromPrior generates a **new** record, copies all fields of the actual record and defines it as the new actual record.

Method LocatePattern,

Used by

TDBExtender, Component

Declaration

```
function LocatePattern(      Tbl : TDBDataSet;  
                          FldName,  
                          SrchStr : String;  
                          IgnoreCase,  
                          SrchDown : Boolean ) : Boolean;
```

Description

Method LocateNextPattern

Used by

TDBExtender, Component

Declaration

```
function LocateNextPattern( Tbl : TDBDataSet ) : Boolean;
```

Description

Method LocateNextPatternReverse

Used by

TDBExtender, Component

Declaration

```
function LocateNextPatternReverse( Tbl : TDBDataSet ) : Boolean;
```

Description

Method LocateViaDlg

Used by

TDBExtender, Component

Declaration

```
procedure LocateViaDlg( Tbl : TDBDataSet; Fld : TField );
```

Description

Method SelectBookmark

Used by

TDBExtender, Component

Declaration

```
procedure SelectBookmark(Tbl : TDBDataSet);
```

Description

Method LUDlg

Used by

TDBExtender, Component

Declaration

```
procedure LUDlg( DTbl : TDBDataSet;  
                LUType : LKUPTYPE;  
                TblName : TFileName;  
                Var Fld : TField);
```

Description

Method TableView

Used by

TDBExtender, Component

Declaration

```
procedure TableView(Tbl : TDBDataSet; KeepSynchron : Boolean);
```

Description

Properties

OwnerForm

GlobalEdit

AktDataSource

AktFieldHasLU

SrchPossible

NextSrchPossible

TblViewPossible

AktFilterState

ErrorBeep

MoveBy

AllowKeys

ConfirmDelete

ConfDelQuestion

ConfirmOverride

ConfOverQuestion

TVReadonly

TVAutoEdit

HandleDBExceptions

ShowStatusOptions

StatusPanel

MessagePanel

MasterSource

ManageGlobalEdit

Method TblFilterEdit

Used by

TDBExtender, Component

Declaration

```
procedure TblFilterEdit(Tbl : TDBDataSet);
```

Description

Method GetBManager

Used by

TDBExtender, Component

Declaration

```
function GetBManager(Tbl : TDBDataSet) : TBManager;
```

Description

This function returns the bookmarkmanager for a given table.

Events

OnClick;
OnDbClick;
OnDragDrop;
OnDragOver;
OnEndDrag;
OnEnter;
OnExit;
OnResize;

Attention : Events without a jumpmark are equal to those of the TNavigator.

MoveBy, Property

Used by

TDBExtender, Component

Declaration

```
property MoveBy : Integer;
```

Description

This property defines the amount of records to be skipped due to a recordgroupchange. Default is 5.

Events

AppOnMessage

AppOnException

ScreenOnACChange

FormOnActivate

FormOnDeactivate

FormOnKeyPhysical

FormOnFocusControl

FormOnException

OnActiveChanged

OnDataSetChanged

OnDataSetScrolled

OnEditChange

OnEditingChanged

OnTableView

Property AllowKeys

Used by

TDBExtender, Component

Declaration

property AllowKeys : TAllowKeys;

Description

Through this set you decide, which actions are available to the user. If a values is not included in the set, its hotkey is ignored and the associate speedbutton of the linked TDBENavigators are disabled.

Possible values included in the set:

Value	Meaning
akSelectNext	If true, the user can focus the next dialogobject via [Enter] ([Alt]- or [Ctrl]-[Enter] prior). (There is no equivalent button within the TDBENavigator)
akDBMove	If true, the user can move through the datasource. If false, the actual record can only be changed via programming.
akLookUp	If true, the user can lookup fields, if the field is defined as 'Lookup with help' within the tablestructure.
akSearch	If true, the user can search on fields.
akBookmark	If true, the user can place bookmarks and jump to previously defined bookmarks.
akFilter	If true, the user can edit, activate and deactivate filters.
akDuplicate	If true, the user can duplicate fields or whole records.
akCancel	If true, the user can cancel changes on the actual record.
akDelete	If true, the user can delete a record.
akInsert	If true, the user can insert a new record.
akTableView	If true, the user can switch to a tableview
akGlobalEdit	If true and <u>ManageGlobalEdit</u> is true, the user can toggle the formglobal editmode.

Property OwnerForm

Used by

TDBExtender, Component

Declaration

```
property OwnerForm : TForm;
```

Description

Property GlobalEdit

Used by

TDBExtender, Component

Declaration

```
property GlobalEdit : Boolean;
```

Description

This property toggles the formglobal editmode, if ManageGlobalEdit is true.

For all DataSources, AutoEdit should be TRUE. The global editmode is realized through setting or resetting the Readonly-Properties of the datasensitive dialogobjects within the form. Only those dialogobjects are considered, which have the Readonly-property set to false during designmode.

Property AktDataSource

Used by

TDBExtender, Component

Declaration

```
property AktDataSource: TDataSource;
```

Description

Property AktFieldHasLU

Used by

TDBExtender, Component

Declaration

```
property AktFieldHasLU : Boolean;
```

Description

Property SrchPossible

Used by

TDBExtender, Component

Declaration

```
property SrchPossible : Boolean;
```

Description

Property NextSrchPossible

Used by

TDBExtender, Component

Declaration

```
property NextSrchPossible : Boolean;
```

Description

Property ConfirmDelete

Used by

TDBExtender, Component

Declaration

```
property ConfirmDelete: Boolean;
```

Description

Property ConfDelQuestion

Used by

TDBExtender, Component

Declaration

```
property ConfDelQuestion : String;
```

Description

This property defines the text presented, if the user wants to delete a record. If not set, a standard-text will be used.

Property ConfirmOverride

Used by

TDBExtender, Component

Declaration

```
property ConfirmOverride : Boolean;
```

Description

Property ConfOverQuestion

Used by

TDBExtender, Component

Declaration

```
property ConfOverQuestion : String;
```

Description

This property defines the text presented, if the user wants to duplicate a field but the field already has a value. If not set, a standard-text will be used.

Property TVReadOnly

Used by

TDBExtender, Component

Declaration

```
property TVReadOnly : Boolean;
```

Description

If a user switches to tableview, this property defines the defaultvalue of the Readonly-property of the TDBGrids within the tableform. The original default is true.

Property TVAutoEdit

Used by

TDBExtender, Component

Declaration

```
property TVAutoEdit : Boolean;
```

Description

If a user switches to tableview, this property defines the defaultvalue of the AutoEdit-property of the TDataSource within the tableform. The original default is false.

Property HandleDBExceptions

Used by

TDBExtender, Component

Declaration

```
property HandleDBExceptions : Boolean;
```

Description

If set to true, the TDBExtender will handle DB-exceptions himself, showing the default BDE-Errorstring within the MessagePanel.

Property ShowStatusOptions

Used by

TDBExtender, Component

Declaration

```
property ShowStatusOptions : TDBShowStatusSet;
```

Description

Property ErrorBeep

Used by

TDBExtender, Component

Declaration

```
property ErrorBeep : Boolean;
```

Description

This property defines, if in case of an DBException handled bei the DBExtender, there will be a system-beep.

Property StatusPanel

Used by

TDBExtender, Component

Declaration

```
property StatusPanel : TPanel;
```

Description

Set this property to an existing TPanel. If done, the statusinformations defined through ShowStatusOptions will be shown there.

Property MessagePanel

Used by

TDBExtender, Component

Declaration

```
property MessagePanel : TPanel;
```

Description

Set this property to an existing TPanel. If done, the actual informations of the datasource will be shown there. If HandleDBExceptions is true, messages about DB-exceptions will also be shown within that panel.

You can use the same panel as for the StatusPanel property.

Property MasterSource

Used by

TDBExtender, Component

Declaration

```
property MasterSource : TDataSource;
```

Description

Through this property, you can define a TDataSource, which will be the target of hotkeys or navbuttonclicks, if the focused dialogobject is not a DB-sensitive object.

Property ManageGlobalEdit

Used by

TDBExtender, Component

Declaration

```
property ManageGlobalEdit : Boolean;
```

Description

This property toggles the controlling mechanism for global editing. If true, global editing can be toggled through the GlobalEdit property. The user switch from and to the editmode via F9 (or with the TDBNavigator), provided that the AllowKeys property contains the akGlobalEdit value.

Type TEditChange

Unit

DBExtend

Declaration

```
TEditChange = procedure(  Sender : TObject;  
                          IsEdit : Boolean;  
                          var CanChange : Boolean) of object;
```

Description

The parameter IsEdit tell you about the new editmode. Use the CanChange-parameter to forbid the editmodechange.

Event AppOnMessage

Used by

TDBExtender, Component

Declaration

```
property AppOnMessage : TMessageEvent;
```

Description

This property contains the value of the property OnMessage of the object Application, as it was set, when the form was activated (not created!).

Never change the property OnMessage of the Application-object directly, if a TDBExtender is placed in the actual form. You can change the eventfunction by accessing the AppOnMessage-property.

Event AppOnException

Used by

TDBExtender, Component

Declaration

```
property AppOnException : TExceptionEvent;
```

Description

This property contains the value of the property OnException of the object Application, as it was set, when the form was activated (not created!).

Never change the property OnException of the Application-object directly, if a TDBExtender is placed in the actual form. You can change the eventfunction by accessing the AppOnException-property.

Event FormOnActivate

Used by

TDBExtender, Component

Declaration

```
property FormOnActivate: TNotifyEvent;
```

Description

This property contains the value of the property OnActivate of the object Application, as it was set, when the form was created (not activated!).

Never change the property OnActivate of the Application-object directly, if a TDBExtender is placed in a form. You can change the eventfunction by accessing the FormOnActivate-property.

Event FormOnDeactivate

Used by

TDBExtender, Component

Declaration

```
property FormOnDeactivate: TNotifyEvent
```

Description

This property contains the value of the property OnDeactivate of the object Application, as it was set, when the form was created (not activated!).

Never change the property OnDeactivate of the Application-object directly, if a TDBExtender is placed in a form. You can change the eventfunction by accessing the FormOnDeactivate-property.

Event FormOnKeyPhysical

Used by

TDBExtender, Component

Declaration

```
property FormOnKeyPhysical : TKeyPhysical;
```

Description

This property corresponds with the OnKeyDown-event of the form, with three differences :

- this event takes place, even if the KeyPreview-property is false.
- the directionkeys ([Enter], Cursor, etc.) are reported too, even if the focused object does not request them.
- the keypress can be marked as handled (via the var-parameter Handled) and will then be not dispatched to the focused object.

Event FormOnFocusControl

Used by

TDBExtender, Component

Declaration

```
property FormOnFocusControl : TNotifyEvent;
```

Description

The event FormOnFocusControl takes place, if a new control within the form get the focus, before it gets the focus. The parameter Sender contains the object, which will receive the focus.

Event FormOnException

Used by

TDBExtender, Component

Declaration

```
property FormOnException : TExceptionEvent;
```

Description

Through this event you get the opportunity to react directly within a form on exceptions, offering each form its own exceptionhandler.

Event OnActiveChanged

Used by

TDBExtender, Component

Declaration

```
property OnActiveChanged : TDSNotification;
```

Description

Event OnDataSetChanged

Used by

TDBExtender, Component

Declaration

```
property OnDataSetChanged : TDSNotification;
```

Description

Event OnDataSetScrolled

Used by

TDBExtender, Component

Declaration

property OnDataSetScrolled : TDSNotification;

Description

Event OnEditingChanged

Used by

TDBExtender, Component

Declaration

```
property OnEditingChanged : TDSNotification;
```

Description

Event OnTableView

Used by

TDBExtender, Component

Declaration

```
property OnTableView : TTVNotification;
```

Description

This event takes place, if the user tries to switch into tableview. Use this event, if you want to control the appearance of the tableform by yourself.

Property VisBtnsMove

Used by

TDBNavigator, Component

Declaration

```
property VisBtnsMove : TMoveBtnSet;
```

Description

Through this set you decide, which Speedbuttons are shown within the functiongroup Move.

Possible values put in the set are:

Value	Visible speedbutton
mnbFirst	Move to the first record.
mnbPGroup	Skip a group of records (Direction begin of table)
mnbPrior	Move to the prior record.
mnbNext	Move to the next record.
mnbNGroup	Skip a group of records (Direction end of table)
mnbLast	Move to the last record.

Property VisBtnsExtend

Used by

TDBENavigator, Component

Declaration

```
property VisBtnsExtend : TExtBtnSet;
```

Description

Through this set you decide, which Speedbuttons are shown within the functiongroup Extend.

Possible values put in the set are:

Value	Visible speedbutton
enbDupField	Set the value of the field to that of the prior one
enbDupRecord	Create a new record, filled with the values of the actual one.
enbLookUp	Lookup fieldvalue.
enbGlobalEdit	Toggle global editmode.

Property GroupSpace1

Used by

TDBNavigator, Component

Declaration

```
property GroupSpace1 : Integer;;
```

Description

Use this property to define the distance between the functiongroups Search and Move.

Property GroupSpace2

Used by

TDBNavigator, Component

Declaration

```
property GroupSpace2 : Integer;
```

Description

Use this property to define the distance between the functiongroups Move and Record.

Property GroupSpace3

Used by

TDBNavigator, Component

Declaration

```
property GroupSpace3 : Integer;
```

Description

Use this property to define the distance between the functiongroups Record and Extend.

Property ButtonWidth

Used by

TDBNavigator, Component

Declaration

```
property ButtonWidth : Integer;
```

Description

Use this property to set the width of each speedbutton. The total width of the component will be adapted.

Methods

Create
Destroy
SetBounds
BtnClick

Attention : Methods without a jumpmark are equal to those of the TNavigator.

Method BtnClick

Used by

TDBNavigator, Component

Declaration

```
procedure BtnClick(Index: TDBNavigateBtn);
```

Description

This procedure simulates the click on a speedbutton and therefore calls the referenced action.

Type TAllowKeys

Unit

DBExtend

Declaration

```
TAllowKey = ( akSelectNext, akDBMove, akLookUp, akSearch,  
akBookmark, akFilter,  
             akDuplicate, akCancel, akDelete, akInsert, akTableView,  
             akGlobalEdit );
```

```
TAllowKeys = set of TAllowKey;
```

Description

TAllowKeys is the amount of values, the property AllowKeys can have.

DBExtend Unit

Objects

[TDBExtender](#)
[TDBNavigator](#)

Types

[TAllowKey](#)
[TAllowKeys](#)
[TDBNavigateBtn](#)
[TDBShowStatus](#)
[TDBShowStatusSet](#)
[TDSNotification](#)
[TExtNavBtn](#)
[TExtBtnSet](#)
[TKeyPhysical](#)
[TMoveNavBtn](#)
[TMoveBtnSet](#)
[TRecordNavBtn](#)
[TRecordBtnSet](#)
[TSrchNavBtn](#)
[TSrchBtnSet](#)
[TTVNotification](#)
[TFilterState](#)

Exceptions

EDBEFilter

Constants

Functions

[GetDuplicateTable](#)

Type TDBShowStatusSet

Unit

DBExtend

Declaration

```
TDBShowStatus = (ssRecNo, ssRecCount, ssTblName, ssEdit, ssInsert);
```

```
TDBShowStatusSet = set of TDBShowStatus;
```

Description

Type TDBENavigateBtn

Unit

DBExtend

Declaration

```
TDBENavigateBtn = (  nbSearch, nbSearchNext, nbSetBookmark,  
nbGotoBookmark,  
                    nbTblFilter, nbActiveFilter, nbTableView,  
                    nbFirst, nbPGroup, nbPrior, nbNext, nbNGroup,  
nbLast,  
                    nbInsert, nbDelete, nbEdit, nbPost, nbCancel,  
nbRefresh,  
                    nbMemoView, nbDupField, nbDupRecord, nbLookUp,  
nbGlobalEdit);
```

Description

Type LKUPTYPE

Unit

DBiTypes

Declaration

```
LKUPTYPE = (
    lkupNONE,           { Paradox Lookup type }
    lkupPRIVATE,       { Has no lookup }
    lkupALLCORRESP,   { Just Current Field + Private }
    lkupHELP,          { All Corresponding + No Help }
    lkupALLCORRESPHELP { Just Current Fld + Help and Fill }
);
```

Description

Type TKeyPhysical

Unit

DBExtend

Declaration

```
TKeyPhysical = procedure( Key: Word;  
                          Shift: TShiftState;  
                          Var Handled : Boolean) of object;
```

Description

Type TDSNotification

Unit

DBExtend

Declaration

```
TDSNotification = procedure( Sender : TObject; DS : TDataSource) of  
object;
```

Description

Type TTVNotification

Unit

DBExtend

Declaration

```
TTVNotification = procedure(      Sender : TObject;
                                Var aBorderStyle : TFormBorderStyle;
                                Var aFormStyle : TFormStyle;
                                Var isReadOnly : Boolean;
                                Var isAutoEdit : Boolean) of object;
```

Description

Type TSrchBtnSet

Unit

DBExtend

Declaration

```
TSrchNavBtn = (snbSearch, snbSearchNext, snbSetBookmark,  
snbGotoBookmark,  
                snbTblFilter, snbActiveFilter, snbTableView);
```

```
TSrchBtnSet = Set of TSrchNavBtn;
```

Description

TSrchBtnSet is the amount of values, the property VisBtnsSearch can have.

Type TMoveBtnSet

Unit

DBExtend

Declaration

```
TMoveNavBtn = (mnbFirst, mnbPGroup, mnbPrior, mnbNext, mnbNGroup,  
mnbLast);
```

```
TMoveBtnSet = set of TMoveNavBtn;
```

Description

Type TRecordBtnSet

Unit

DBExtend

Declaration

```
TRecordNavBtn = (rnbInsert, rnbDelete, rnbEdit, rnbPost, rnbCancel,  
rnbRefresh);
```

```
TRecordBtnSet = set of TRecordNavBtn;
```

Description

Type TExtBtnSet

Unit

DBExtend

Declaration

```
TExtNavBtn = (enbMemoView, enbDupField, enbDupRecord, enbLookUp,  
enbGlobalEdit);
```

```
TExtBtnSet = set of TExtNavBtn;
```

Description

Event ScreenOnACChange

Used by

TDBExtender, Component

Declaration

```
property ScreenOnACChange : TNotifyEvent;
```

Description

This property contains the value of the property OnActiveControlChange of the object Screen, as it was set, when the form was activated (not created!).

Never change the property OnActiveControlChange of the Screen-object directly, if a TDBExtender is placed in the actual form. You can change the eventfunction by accessing the ScreenOnACChange-property.

Function GetDuplicateTable

Unit

DBExtend

Declaration

```
function GetDuplicateTable(AOwner : TComponent; STbl : TTable) :  
TTable;
```

Description

Hotkeys of the TDBExtender

Through this hotkeys, the user accesses the database-functions of the TDBExtender. A function is accessible, if :

- the focused object is a datasensitive one or
- the property MasterSource is set to a valid TDataSource,
- the property AllowKeys allows that action.

Key	Action
[Enter]	Focus the next dialogobject (equal to [TAB])
[Alt]-[Enter]	Focus the prior dialogobject (equal to [Shift]-[TAB])
[Ctrl]-[Enter]	CR in memofields
[Ctrl]-S	Opens the dialog for searching on fields
F3	Continues the last search
[Ctrl]-F3	Continues the last search with opposite direction
[Ctrl]-K-n	Set a bookmark (n:1-9)
[Ctrl]-K-0	Set a bookmark. The number of the bookmark will be the next one.
[Ctrl]-Q-n	Goto bookmark n (n:1-9)
[Ctrl]-Q-0	Opens a dialog for bookmarkmanagement
[Ctrl]-F	Opens a dialog for editing filters
F7	Switches to tableview
[Ctrl]-F7	Switches to tableview, the table of the TVGrid and the form are synchronized
[Ctrl]-PageUp	Move to first record
[Shift]-PageUp	Skip a group of records (Direction begin of table)
PageUp	Move to prior record
PageDown	Move to next record
[Shift]-PageDown	Skip a group of records (Direction begin of table)
[Ctrl]-PageDown	Move to last record
[Ins]	Insert new record
[Ctrl]-[Del]	Delete record
[Ctrl]-Back	Cancel changes on record
F2	Switches to memoview
[Ctrl]-D	Duplicate field (takeover from prior record)
[Ctrl]-[Shift]-D	Duplicate record (creates new record with values equal to actual record)
[Ctrl]-[Space]	Opens lookup-dialog
F9	Toggle global editmode

Speedbuttons TDBNavigator

These speedbuttons offer the access to the TDBExtender-functions via mouse. If a button is en- or disabled is controlled by the linked TDBExtender.

Button	Action
	Opens the dialog for searching on fields
	Continues the last search
-[Ctrl]	Continues the last search with opposite direction
	Set bookmark on actual record
	Opens a dialog for bookmarkmanagement
	Opens a dialog for editing filters
-Rightclick	Opens a popup-menu for saving and loading filterdefinitions
	Activate/Deactivate filter
	Switches to tableview
-[Ctrl]	Switches to tableview, the table of the TVGrid and the form are synchronized
	Move to first record
	Skip a group of records (Direction begin of table)
	Move to prior record
	Move to next record
	Skip a group of records (Direction begin of table)
	Move to last record
	Insert new record
	Delete record
	Cancel changes on record
	Refresh the DataSource
	Switches to memoview
	Duplicate field (takeover from prior record)
	Duplicate record (creates new record with values equal to actual record)
	Opens lookup-dialog
	Toggle global editmode

Tableview

Within a tableview, all records of the, through the focused dialogobject referenced, DataSet are shown through a TDBGrid within a own form.

There are two kinds of tableviews: the normal and the synchronized. Since the normal tableview uses its own TTable for showing the records, the synchronized uses the same TTable as the dialogobject from which the tableview was initiated. Therefore a change of the actual record within the tableview causes a change in the ownerform too.

Type TFilterState

Unit

DBExtend

Declaration

```
TFilterState = (ftsNA, ftsDropped, ftsAdded, ftsActive);
```

Description

TFilterState declares the values, the property AktFilterState of the TDBExtender component can have.

Property AktFilterState

Used by

TDBExtender, Component

Declaration

```
property AktFilterState : TFilterState;
```

Description

Runtime and readonly. AktFilterState presents the filterstatus of the actual DataSource.

Property TblViewPossible

Used by

TDBExtender, Component

Declaration

```
property TblViewPossible : Boolean;
```

Description

Property HorizOrientation

Used by

TDBNavigator, Component

Declaration

```
property HorizOrientation : Boolean;
```

Description

Use this property to set the orientation of the navigator. Turn it to false and the navigator will be shown in vertical orientation.

Property ButtonHeight

Used by

TDBNavigator, Component

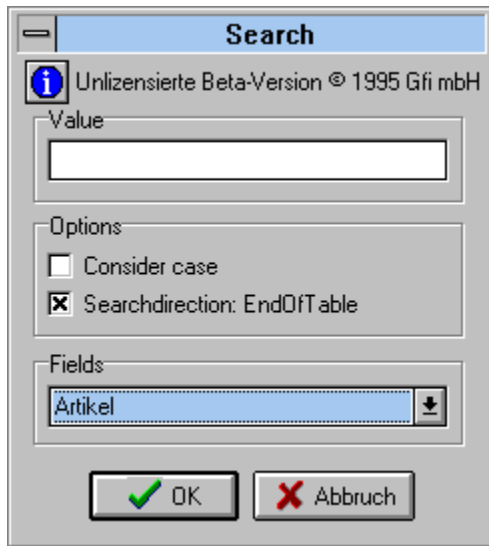
Declaration

```
property ButtonHeight : Integer;
```

Description

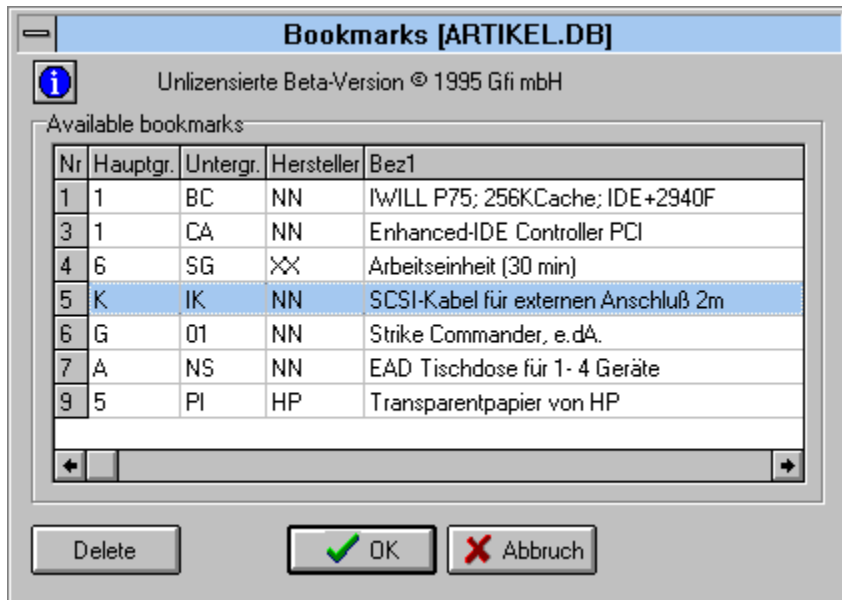
Use this property to set the height of each speedbutton. The total height of the component will be adapted.

Searchdialog



This dialog appears, if the user clicks on the speedbutton for searching or presses [Ctrl]-S. Click on the different areas of the bitmap to get more information.

Bookmarkmanagement dialog



This dialog appears, if the user clicks on the speedbutton for bookmarkmanagement or presses [Ctrl]-Q.

Click on the different areas of the bitmap to get more information.

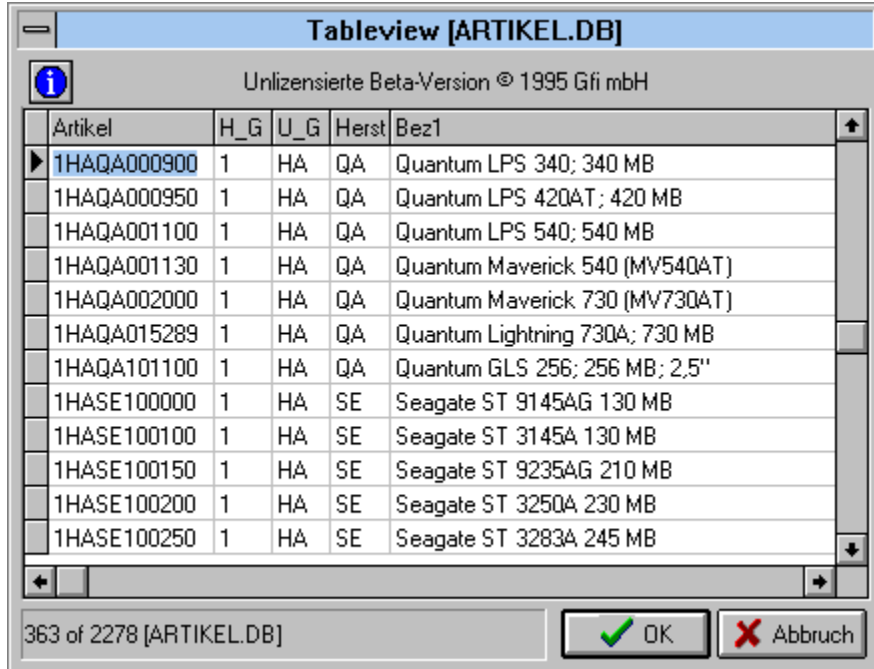
Filterdefinition dialog

	Field	Operator	Operand	
	Artikel	Equal	1CDNN..	<< Delete
And	EK	Less than	325	<< Delete
And				<< Delete
				<< Delete
				<< Delete
				<< Delete
				<< Delete
				<< Delete
				<< Delete
				<< Delete

OK Abbruch

This dialog appears, if the user clicks on the speedbutton for filterediting or presses [Ctrl]-F. Click on the different areas of the bitmap to get more information.

Tableview form



The screenshot shows a window titled "Tableview [ARTIKEL.DB]" with a subtitle "Unlizenzierte Beta-Version © 1995 Gfi mbH". The window contains a table with the following columns: Artikel, H_G, U_G, Herst, and Bez1. The table lists 15 items, including Quantum LPS and Seagate hard drives. At the bottom of the window, there is a status bar showing "363 of 2278 [ARTIKEL.DB]" and two buttons: "OK" and "Abbruch".

Artikel	H_G	U_G	Herst	Bez1
▶ 1HAQA000900	1	HA	QA	Quantum LPS 340; 340 MB
1HAQA000950	1	HA	QA	Quantum LPS 420AT; 420 MB
1HAQA001100	1	HA	QA	Quantum LPS 540; 540 MB
1HAQA001130	1	HA	QA	Quantum Maverick 540 (MV540AT)
1HAQA002000	1	HA	QA	Quantum Maverick 730 (MV730AT)
1HAQA015289	1	HA	QA	Quantum Lightning 730A; 730 MB
1HAQA101100	1	HA	QA	Quantum GLS 256; 256 MB; 2,5"
1HASE100000	1	HA	SE	Seagate ST 9145AG 130 MB
1HASE100100	1	HA	SE	Seagate ST 3145A 130 MB
1HASE100150	1	HA	SE	Seagate ST 9235AG 210 MB
1HASE100200	1	HA	SE	Seagate ST 3250A 230 MB
1HASE100250	1	HA	SE	Seagate ST 3283A 245 MB

This form appears, if the user clicks on the speedbutton for tableview or presses F7.

The appearance of the form depends on the owner-form. If the FormStyle of the owner-form is fsMDIChild, then the tableview itself will be shown as an MDIChild. Otherwise the tableview will be presented as a dialog.

If the form is an MDIChild, you can have multiple tableviews at the same time and switch between owner-form and tableview, without closing the tableview.

Lookup dialog

LookUp [HERSTELL.DB]

Unlizenzierte Beta-Version © 1995 Gfi mbH

ID	Bezeichnung
QA	Quantum
QL	Q-Logic
QM	QMS
SA	Samsung
SE	Seagate
SH	Sharp
SI	Siemens
SK	Seiko
SM	SMC
SO	Sony
SP	Spea
SQ	SyQuest
SU	SummaSketch
SY	Symantec

89 of 113 [HERSTELL.DB]

OK Abbruch

This form appears, if the focused object has a lookup defined for it (during tabledefinition) and the user clicks on the speedbutton for lookup or presses [Ctrl]-[Space].
If OK is clicked, the fieldvalue of the selected record will be taken over.

Enter the value, you want to search for.

As a wildcard, '..' can be used. This wildcard replaces any amount of any character. A wildcard for a single character is not implemented.

Since all fieldtypes are internally interpreted as strings, you can work with substrings on date- and number-fields too.

Within memos, only the first 64000 characters are used.

Example: The entry '..ext..' would find: 'extract', 'DBExtender', 'text', etc.

Through the option 'consider case' you decide, whether the case of the characters will be important for the search, or not.

Through the option 'Searchdirection: EndOfTable' you decide, whether the search will start at the beginning of the table and searches downwards or opposite. If marked, the search will find the first appearance of the value, otherwise it will find the last.

Through the combobox fields you select the field to search on.

The listbox 'available bookmarks' contains all defined bookmarks for the table.
Each line shows the number of the bookmark and the indexvalues of the corresponding record.

The OK button causes a move to record, referenced through the selected bookmark. If the record can not be found, an exception will be raised.

Through the combobox 'link' you choose the logical connection between two lines of the filter.

Use the combobox 'field' to choose the field, the filterexpression will be assigned to.

Through the combobox 'operator' you choose the operator combining the field and the value. Possible operators are: 'empty', 'not empty', 'equal', 'not equal', 'greater then', 'greater equal', 'less then' and 'less equal'.

Within the editfield 'operant', you insert the filtervalue, which will be combined through the operator with the tablefield.

Using a filter, you are in need to insert a valid value, according to the fieldtype of the referenced field (in contrast to the search on fields).

If you have chosen 'equal' as the operator, you also can use substringfiltering (only on stringtyped-fields). Use '.' as a wildcard. The wildcard can only be placed at the end of the string, a wildcard in front of the string is not possible.

The button 'delete' clears the line of the filterdefinition.

The OK button sets and activates the defined filter.

TBManager Object

[Properties](#)

[Methods](#)

Unit

[DBEBMDef](#)

Description

The TBManager-object is used to manage all bookmarks, that are defined on a table. The [TDBExtender](#) owns a TBManager for each table.

The TBManager is similar to a sorted list. The items in the list are of the class [TBItem](#) (the object, that holds the bookmark). The list is sorted by the bookmarknumber, each TBItem is referenced by.

Normally, you would not access the TBItems directly, but you would use the properties and methods of the manager for setting, deleting and going to a bookmark.

Method DeleteBookMark

Used by

TBManager, Object

Declaration

```
procedure DeleteBookMark(BMNo : Integer);
```

Description

The method DeleteBookMark deletes the TBMItem, referenced by the number BMNo. Nothing happens, if there is no TBMItem with that number.

Property BItems

Used by

TBManager, Object

Declaration

```
property BItems[Index : Integer] : TBMItem;
```

Description

ReadOnly. The property BItems is the default-property of the TBManager. Through this property, you get access to all defined BItems of the manager. The list is sorted by the bookmarknumber of the BItems.

Methods

AddBookMark

Create

Clear

DeleteBookMark

Destroy

FindBMbyNo

GotoMark

GetIndexNames

IndexOfBM

MoveBMNo

SetBookMark

Property Table

Used by

TBManager, Object

Declaration

```
property Table : TDBDataSet;
```

Description

The property Table defines the table, the bookmarks will be managed for. Changing this property leads to the delete of all bokkmarks defined for the table.

Properties

Table
BMItems
Count

Method AddBookMark

Used by

TBManager, Object

Declaration

```
function AddBookMark : Integer;
```

Description

The method AddBookmark creates a new bookmark, based on the actual record corresponding to the via Table referenced TTable. The returncode of the function is the number of the created TBMItem. If you would like to create a new bookmark, defining the number of the bookmark yourself, you have to call the SetBookMark method.

Property Count

Used by

TBManager, Object

Declaration

```
property Count : Integer;
```

Description

Readonly. This property supplies you with the amount of TBMIItems, defined within the manager.

\$#Method Clear

Used by

TBManager, Object

Declaration

```
procedure Clear;
```

Description

This method deletes all TBMItems, defined by the manager.

Method DeleteBookMark

Used by

TBManager, Object

Declaration

```
procedure DeleteBookMark(BMNo: Integer);
```

Description

This method deletes the TBMItem, referenced by the bookmarknumber BMNo. If there is no TBMItem with that number, nothing will happen.

Method FindBMbyNo

Used by

TBManager, Object

Declaration

```
function FindBMbyNo(BMNo:Integer; var BM:TBMItem) : Integer;
```

Description

The method FindBMbyNo returns the TBMItem within the BM-parameter, referenced by the bookmarknumber BMNo. The returncode of the function supplies you with the indexnumber of the TBMItem within the list. If no TBMItem with the BMNo-number can be found, BM equals nil and the returncode is -1.

Method GotoMark

Used by

TBManager, Object

Declaration

```
function GotoMark(BMNo:Integer) : Boolean;
```

Description

The method GotoMark move the table, referenced by the Table property, to the record, referenced by the TBItem with the bookmarknumber BMNo. The returncode is true, if everything went fine. If there is no TBItem with a bookmarknumber BMNo or the navigation within the table went wrong, the returncode is false (no exception will be raised!).

Method GetIndexNames

Used by

TBMManager, Object

Declaration

```
procedure GetIndexNames(var IdxNames : TStringList);
```

Description

The method GetIndexNames fills the stringlist IdxNames with the fieldnames of the stored fieldvalues. The fieldnames correspond with the fields, shown within the Lesezeichenbookmark-dialog. The difference between this method and the TTable-method GetIndexNames is, that if no Index is defined for a table, the first MaxCount4NonIdx fields of the table are used.

Constant MaxCount4NonIdx

Used by

TBManager, Object

Declaration

```
MaxCount4NonIdx = 5;
```

Description

The constant MaxCount4NonIdx defines the amount of fields, used by the Lesezeichendialog, if no Index is defined for the referenced table.

Method IndexOfBM

Used by

TBManager, Object

Declaration

```
function IndexOfBM(BMNo:Integer): Integer;
```

Description

The method IndexOfBM supplies you with the indexnumber of the TBMItem with the bookmarknumber BMNo. This indexnumber can be used with the BMIItems-property. If no TBMItem with that BMNo can be found, -1 will be returned.

Method MoveBMNo

Used by

TBManager, Object

Declaration

```
procedure MoveBMNo(CurBMNo, NewBMNo : Integer);
```

Description

The method MoveBMNo sets the bookmarknumber of the TBMItem with the number CurBMNo to NewBMNo. Through this, the TBMItem will be moved within the list. If there is another TBMItem with the NewBMNo, that item will be moved correspondingly.

TBMItem Object

[Properties](#)

[Methods](#)

Unit

[DBEBMDef](#)

Description

The TBMItem-object is a internal object, used as a container for storing the bookmark defined for a table. It is managed by the [TBManager](#)-object.

Properties

IndexVals

BMNo

Methods

Create

Destroy

GotoMark

Property IndexVals

Used by

TBMItem, Object

Declaration

```
property IndexVals : TStringList;
```

Description

ReadOnly. The property IndexVals offers you access to the index-fieldvalues of the record at the point in time, the bookmark was defined. These values are shown within the Lesezeichendialog and are used for orientation.

Method Create

Used by

TBManager, Object

Declaration

```
constructor Create(aTbl : TDBDataSet);
```

Description

The constructor Create creates a new manager-object for the referenced table.

Property BMNo

Used by

TBMItem, Object

Declaration

```
property BMNo : Integer;
```

Description

The property BMNo offers you access to the number of the TBMItem. Although you have writing-rights to that property, you must not change it. The value is managed by the owning TBManager-object.

Method Create

Used by

TBMItem, Object

Declaration

```
constructor create(aTbl : TDBDataSet; BMNo : Integer);
```

Description

The constructor Create creates a new TBMItem-object. A new bookmark is defined on the via aTbl referenced table. The number of the TBMItem is defined by the BMNo-parameter.

Method Destroy

Used by

TBMItem, Object

Declaration

```
destructor Destroy;
```

Description

The destructor Destroy frees the memory, allocated by the object. The bookmark defined on the table is although freed.

Method GotoMark

Used by

TBMItem, Object

Declaration

```
function GotoMark : Boolean;
```

Description

The method GotoMark moves the table to the defined bookmark. The returncode is true, if the record could be found, otherwise false (no exception will be raised).

Method Destroy

Used by

TBManager, Object

Declaration

```
destructor Destroy;
```

Description

The destructor Destroy frees the memory allocated by the object. All TBItem-object created through this object are destroyed automatically.

Method MemoView

Used by

TDBExtender, Component

Declaration

```
procedure MemoView(Fld : TField; AsReadOnly : Boolean);
```

Description

This function returns the bookmarkmanager for a given table.

Event OnEditChange

Used by

TDBExtender, Component

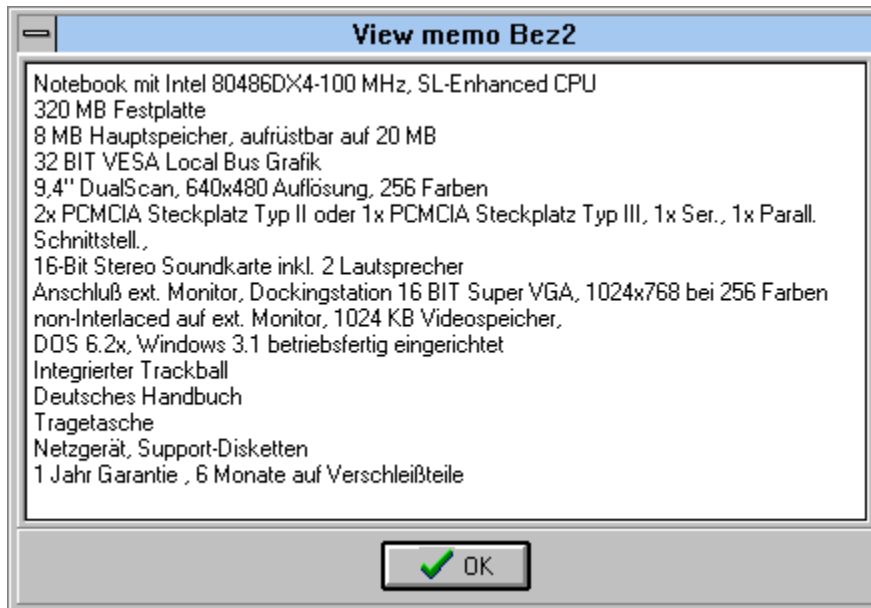
Declaration

```
property OnEditChange : TEditChange;
```

Description

This event occurs, if the globaledit-mode is to be changed.

Memoview dialog



This dialog appears, if the user clicks on the speedbutton for memoview or presses F2. If the memofield can be edited, an OK- and a Cancel-button appear. In this case the OK-button will save the modifications made to the memo. In Readonly-Mode, only a OK-button will be shown..

DBEBMDef Unit

Objects

TBMItem

TBMManager

Constants

MaxCount4NonIdx

